



CONSORTIUM  
PROCUREMENT  
CONSTRUCTION

# ENERGY EFFICIENCY CONSULTANCY SERVICES

1ST JUNE 2020 - 31ST MAY 2024









CPC was created out of a long-running partnership between the Northern Housing Consortium and LHC, born out of each organisation’s passion to improve standards of homes and buildings, delivering real social value to our local communities, through excellence in procurement.


Working together we now offer advice, support and guidance to all public sector organisations across the North and the Midlands providing access to LHC’s suite


of framework solutions, which are built on more than 50 years of public sector construction procurement expertise and knowhow. This means no matter how large or small your scope of work requirements are, you will have peace of mind that our extensive range of pre-approved suppliers will deliver your project on time, on budget and to the agreed quality standards.

**Consortium Procurement Construction (CPC)**  
Leeds Office | Office 34, Pure Offices | Turnberry Park Road | Morley, Leeds | LS27 7LE

 0113 350 8907

 [info@cpconstruction.org.uk](mailto:info@cpconstruction.org.uk)

 @CPC\_Procure

 Consortium Procurement Construction

# ABOUT THIS FRAMEWORK

CPC supports the governments future targets for Zero Carbon, providing Energy Efficiency Consultancy services, to complement LHCs eighth edition of our Energy Efficiency Measures and Associated Works Framework Agreement (N8).

Focus is on the fabric of the property, retrofitting of existing buildings with energy efficiency measures and whole house refurbishments to improve building quality standards. These integrated solutions are packed with innovative new technology, representing 30 years’ experience of procuring retrofit solutions for publicly-owned housing to improve their energy performance.

As a minimum, Tenderers for N8C are required to have the capability and experience to provide consultancy services for the delivery of the following 21 energy efficiency measures, which form the key services for the N8 Framework Agreement:

• External wall insulation	• Cavity wall insulation	• Internal wall insulation
• Insulation materials (Loft)	• Biomass boilers	• Solar PV with battery storage
• Air to water heat pumps	• District heating interface units	• Traditional boilers
• Rainscreen and cladding	• Combined heat & power (CHP) or combined cooling & heat & power (CCHP)	• Gas absorption heat pumps
• Boiler optimisation technologies	• Lighting controls	• EV charging infrastructure
• Solar thermal systems	• Building energy management systems	• Floor insulation
• Ground source heat pumps	• Commercial boilers	• Electric heaters

The tender was carried out in strict accordance with the EU Procurement Directive and UK public sector procurement rules.



# ABOUT THIS FRAMEWORK

Places on the framework were awarded to 5 different suppliers. The framework will run for a maximum of 4 years. However, individual call-off projects can be completed beyond the 4 year duration of the framework as long as a contract is in place prior to the framework expiry date. The term of the framework is from **1st June 2020 to 31st May 2024**.

In terms of the core services required under this framework, appointed companies will be able to provide the following:

## Building Energy Management

- > Building Energy Policy & Strategy Development
- > Energy Surveys and Audits
- > Monitoring and Targeting
- > Independent Report on Metering Arrangements (IRMA)
- > Chartered Surveyors Reports
- > Domestic and non-domestic BREEAM Assessments (for existing buildings)
- > Funding and Finance



## Project Management

- > Project Manager
- > Clerk of Works
- > Health & Safety
- > Principal Designer duties
- > Health & Safety Advisors

## Asset Management, Project Specification

- > Energy Stock Condition Surveys and Reports
- > Product Specification and Procurement
- > Quantity Surveyors

## Building Energy Certificates

- > Display Energy Certificates (DEC) and Advisory Report (AR)
- > Energy Performance Certificates (EPC) Domestic
- > Energy Performance Certificates (EPC) Non-Domestic



The framework is available to be used in the following:

- > Domestic dwellings
- > Managed leasehold properties
- > Sheltered housing and supported housing and care home properties
- > Schools and colleges market rent properties
- > Universities, student accommodation; and other tenures
- > Leisure facilities
- > Public offices (non 24/7 hour operation)
- > Multi-functional/multi-use (24/7 hour operation)
- > Other properties owned or managed by a public body framework end user

# EVALUATION AWARD WEIGHTING CRITERIA

## Quality 60%

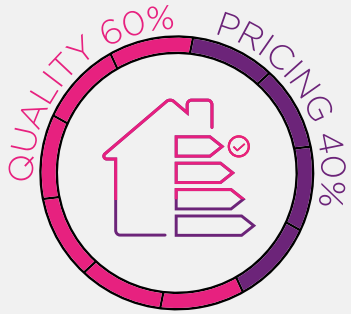
The Technical/Quality questions in the ITT are as follows:

- > Project case study - 15%
- > Framework management and capability - 13%
- > Project resources - 10%
- > Regional capability - 7%
- > CDM compliance - 8%
- > Social value - 7%

## Price 40%

The elements of cost used for this particular pricing model were the following:

- > Schedule of Rates e.g. Building Energy Audits, Building Certificates (EPC), Clerk of Works fees etc.
- > Daily and hourly consultancy rates
- > Project management fees
- > Regional uplifts

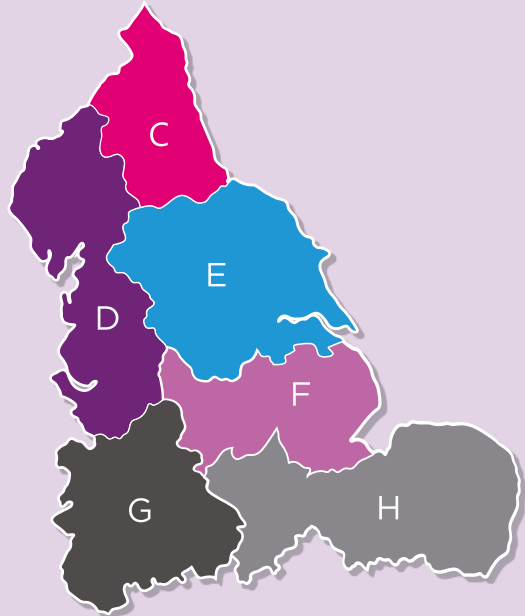


## Appointed Companies\*

The Appointed Companies below have been appointed, due to their experience in providing consultancy services within energy efficiency and cover North, Central and East of England.

	C	D	E	F	G	H
> Currie and Brown	✓	✓	✓	✓	✓	
> Drees & Sommer						✓
> GEP Environmental	✓	✓	✓			
> MDG Consultants	✓	✓	✓			
> Rybka	✓	✓	✓	✓	✓	✓

\*LISTED ALPHABETICALLY



# CALL-OFF AWARD OPTIONS

The Framework allows clients the option of:

**Direct award** without further competition, where all terms and conditions of the call-off project are within the terms and conditions of the framework

OR

**Mini-competition**, where terms and conditions of the call-off may vary or be modified from the framework or at the choice of the client.

When calling off projects, clients can use any one of a range of standard forms of building contract including JCT/SBCC, NEC/NEC4, ACE, PPC, TPC, FAC1, or their own in-house agreement.

## Eligibility

CPC is a not-for-profit organisation, governed by public law and a central purchasing body providing procurement services. Over 200 publicly funded organisations throughout England use CPC frameworks to procure works, goods and services to construct, refurbish and maintain social housing, schools and public buildings:

- > Local Authorities and any subsidiaries and joint-venture vehicles of those Local Authorities.
- > Registered Social Landlords (RSL), Tenant Management Organisations (TMOs) & Arm's Length Management Organisations (ALMOs)
- > Health Authorities, Councils, Boards and Trusts
- > Publicly Funded Schools
- > Universities and Further Education Establishments
- > Colleges
- > Police Forces
- > Fire and Rescue services
- > Registered Charities

Details of those contracting authorities identified are listed at [www.lhc.gov.uk/24/](http://www.lhc.gov.uk/24/)

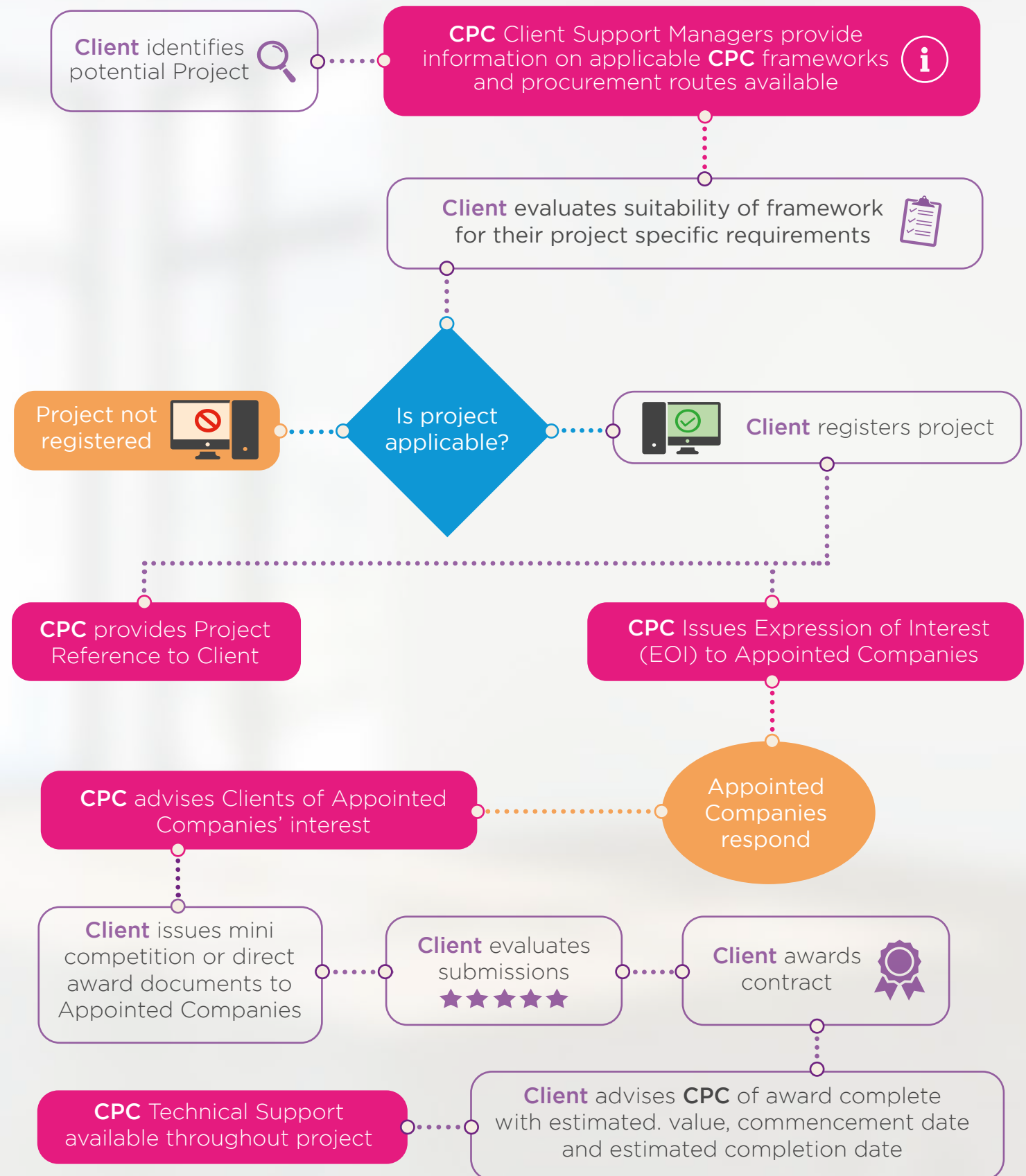
## Accessing the Framework

Companies appointed to CPC frameworks are required to pay a small percentage ('the levy') of the total value of every invoice submitted to clients and to submit quotations to clients that are inclusive of the levy. There are no access fees in order to browse our frameworks. As a not-for-profit organisation, CPC returns surplus levy income to our clients to support social value initiatives in the local communities they serve.

## General Terms and Conditions

LHC uses the FAC-1 standard form of contract to manage our frameworks. The LHC pro forma, which should be read in conjunction with the FAC-1 in published form, details the terms and conditions that govern the operation of the framework, including the procedures to call off projects under the framework. A free copy of the LHC proforma is available upon request. The FAC-1 in standard published form can be purchased at a negotiated rate from ACA, by emailing [office@acarchitects.co.uk](mailto:office@acarchitects.co.uk) and quoting discount code reference: LHCFAC2516102017.

# THE PROCESS OF USING OUR FRAMEWORK





CONSORTIUM  
PROCUREMENT  
CONSTRUCTION



0113 824 6664



[www.cpconstruction.org.uk](http://www.cpconstruction.org.uk)



[info@cpconstruction.org.uk](mailto:info@cpconstruction.org.uk)



@CPC\_Procure



Consortium Procurement Construction

A partnership between



Trusted procurement for  
better buildings and homes



**NORTHERN  
HOUSING  
CONSORTIUM**  
VOICE OF THE NORTH